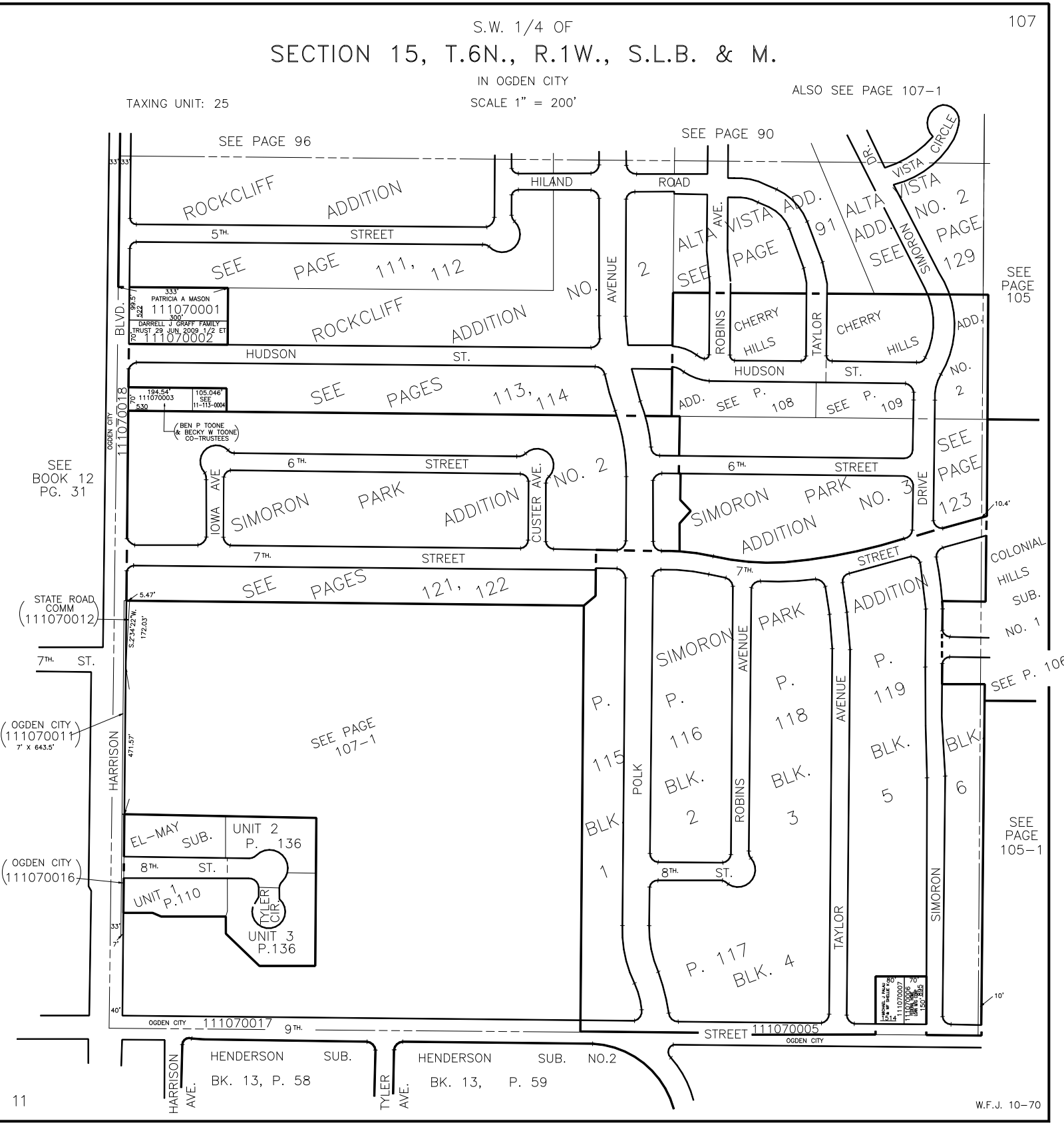


S.W. 1/4 OF SECTION 15, T.6N., R.1W., S.L.B. & M.

IN OGDEN CITY SCALE 1" = 200'

ALSO SEE PAGE 107-1

TAXING UNIT: 25



SEE BOOK 12 PG. 31

STATE ROAD COMM 111070012

OGDEN CITY 111070011 7' X 643.5'

OGDEN CITY 111070016